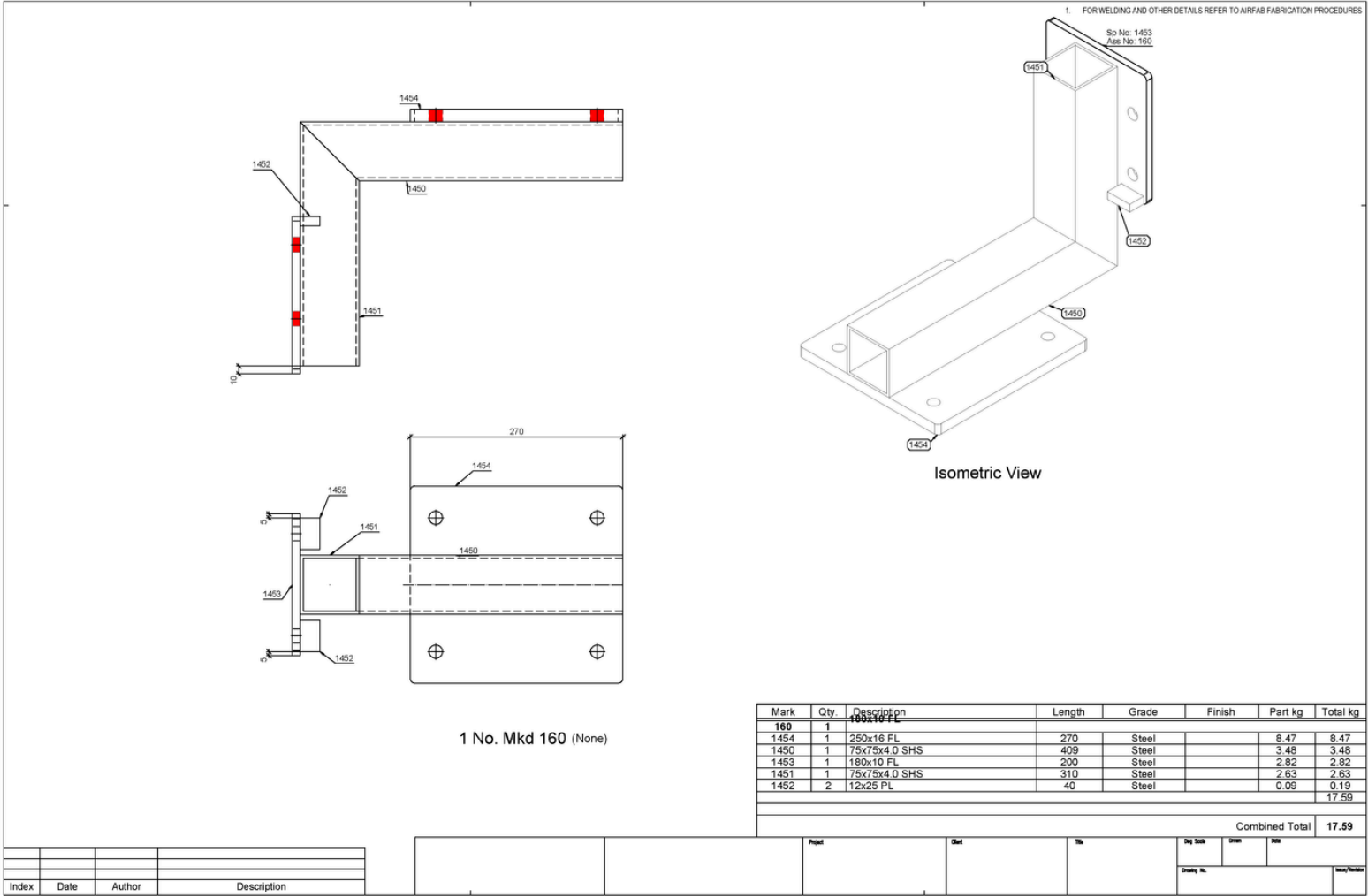
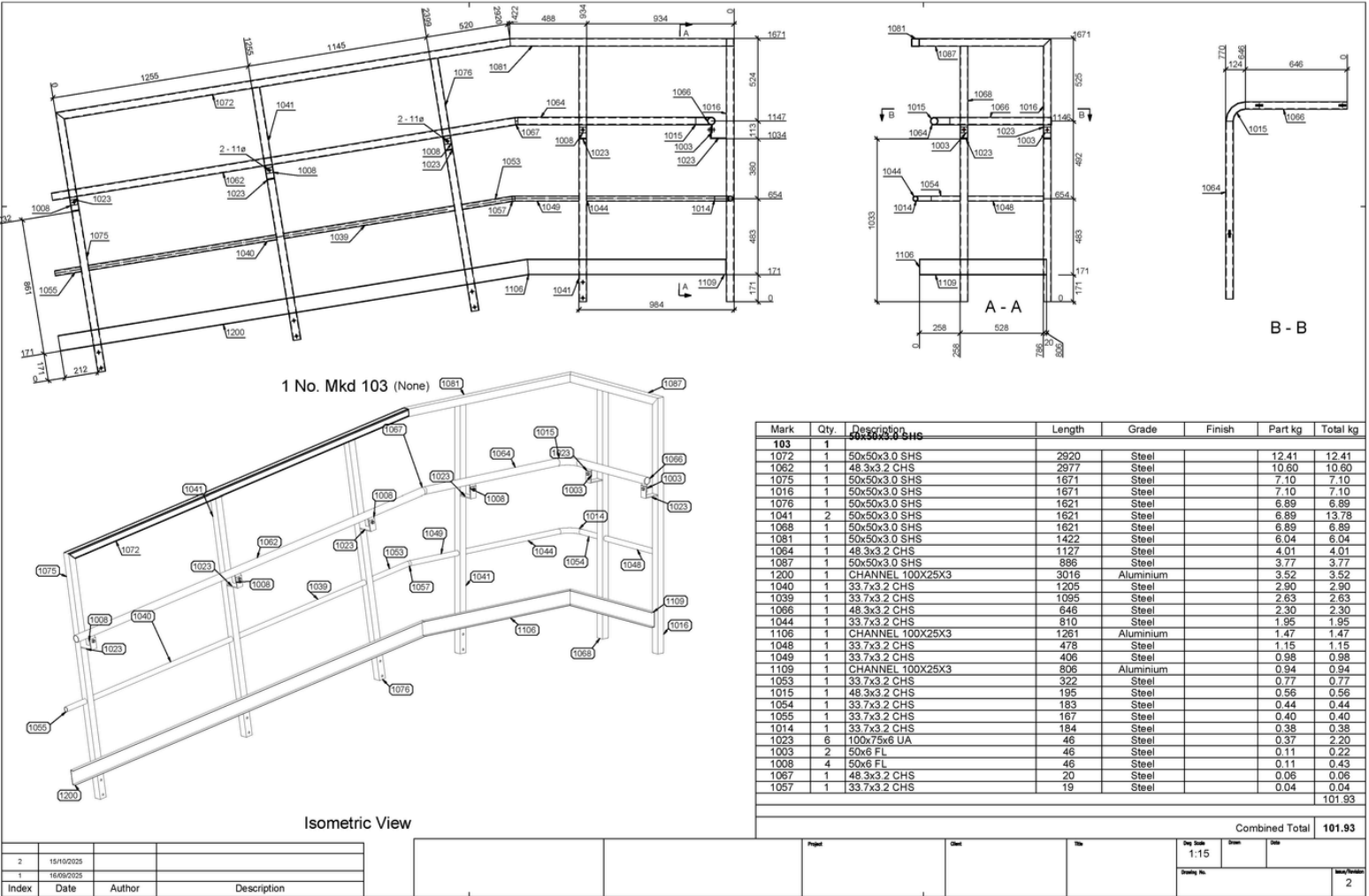
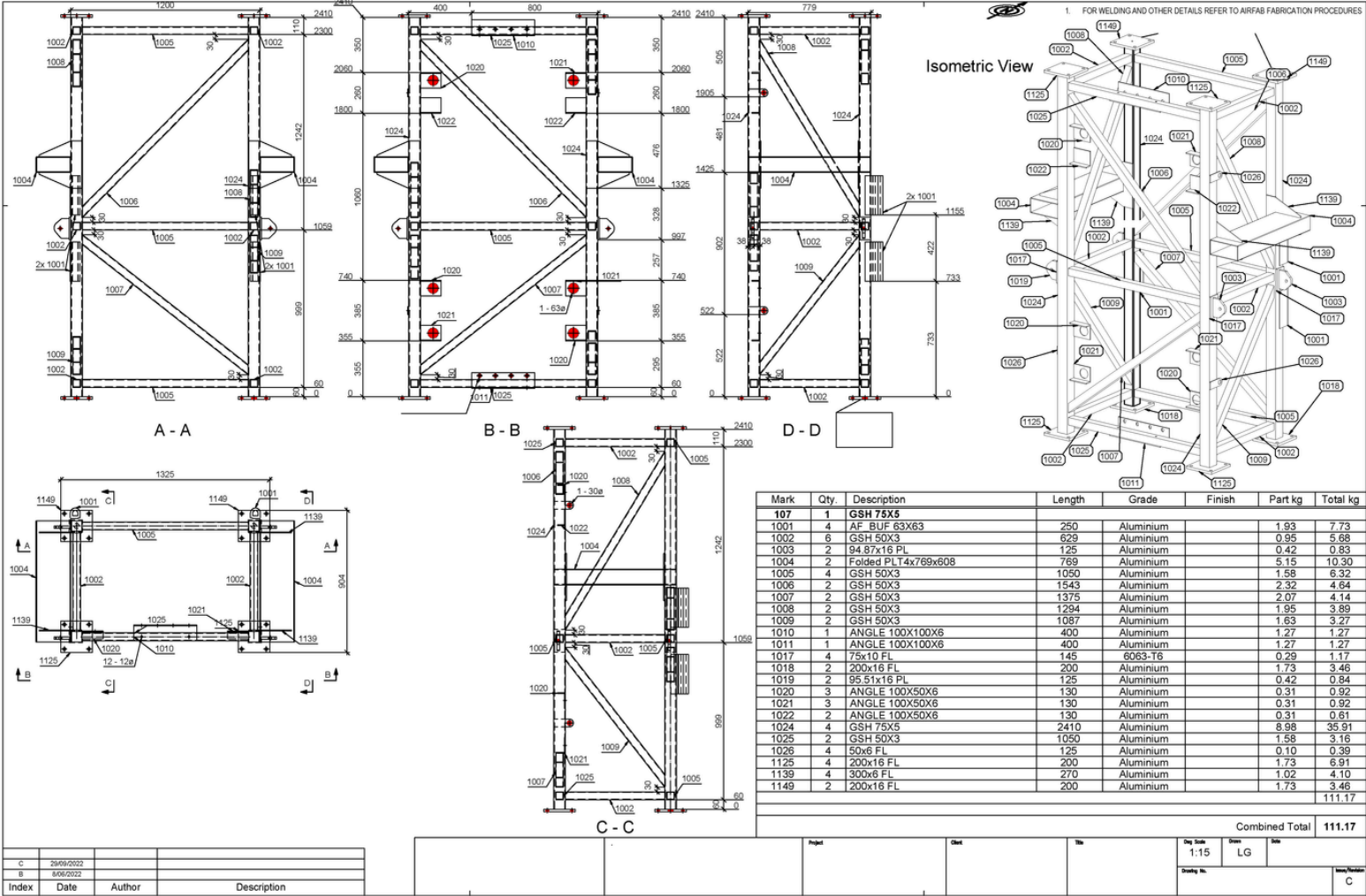


This portfolio showcases selected projects for reference purposes only. Due to the high level of confidentiality required by our clients, critical information, labels, and specific details have been intentionally omitted. We respect the privacy of our clients and adhere to all confidentiality agreements in place.

ASSEMBLY DRAWINGS

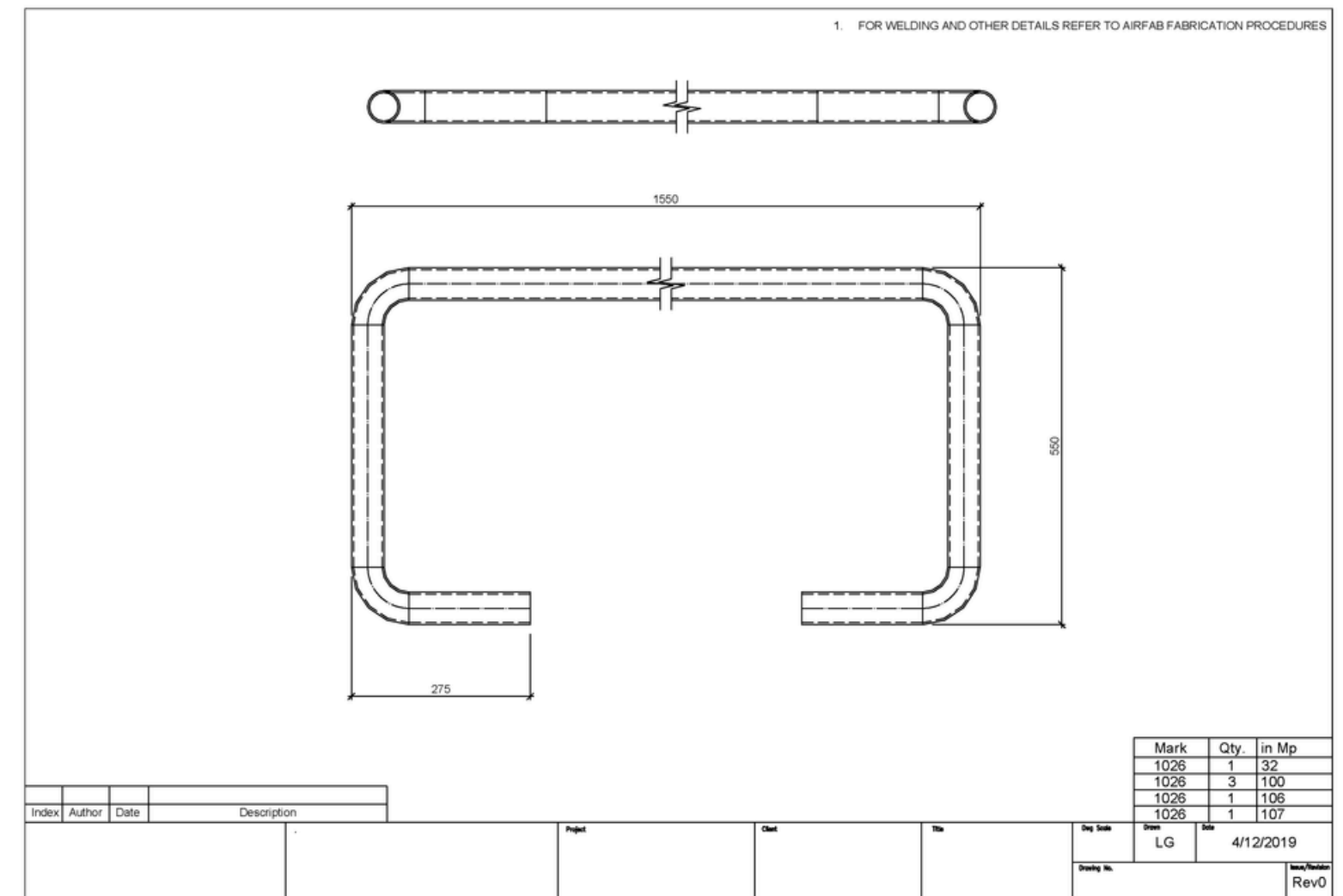
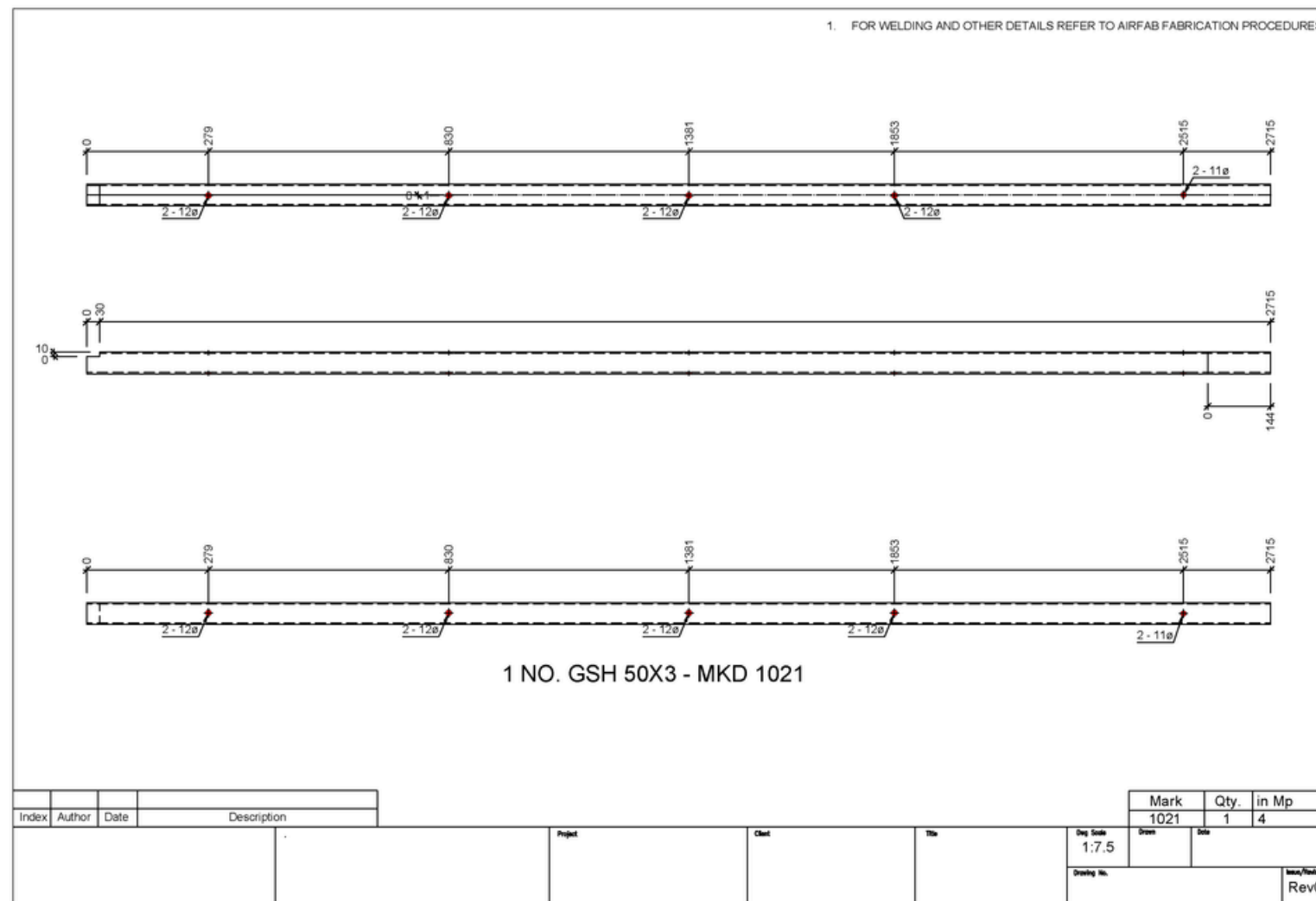
This series of assembly drawings showcases the design of structural subassemblies used in the fabrication of aluminum and steel platforms. Adhering to AS 1657-2018 standards for fixed platforms, walkways, and stairways, these drawings highlight our expertise in creating detailed designs ready for production. Utilizing a combination of Revit and Advance Steel, we ensured precision in both concept and detailed fabrication drawings.



This portfolio showcases selected projects for reference purposes only. Due to the high level of confidentiality required by our clients, critical information, labels, and specific details have been intentionally omitted. We respect the privacy of our clients and adhere to all confidentiality agreements in place.

PART DRAWINGS

Our Part Drawings provide intricate representations of individual elements, including brackets, supports, posts, etc, essential for larger structural assemblies. Our typical projects encompass over 400 individual part drawings. Leveraging our expertise in Advance Steel and parametric design, we ensure that any design changes automatically update all related components and views. This automation significantly reduces the need for repetitive manual adjustments, greatly enhancing both efficiency and accuracy in delivering fabrication-ready specifications.



This portfolio showcases selected projects for reference purposes only. Due to the high level of confidentiality required by our clients, critical information, labels, and specific details have been intentionally omitted. We respect the privacy of our clients and adhere to all confidentiality agreements in place.

SAW LIST - MATERIAL LIST

Company

Client:

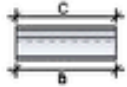
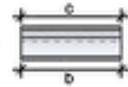
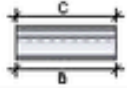
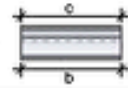
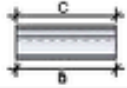
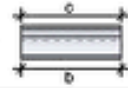
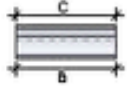
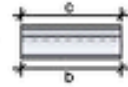
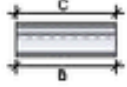
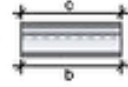
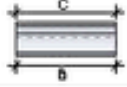
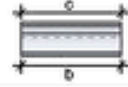
Job No:

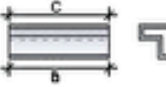
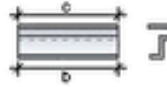

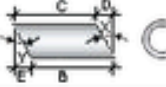
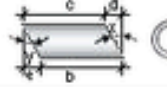

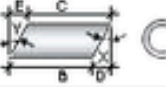
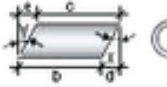
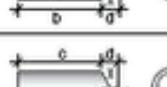
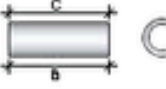
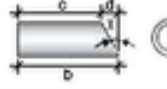

Project:

Detailer:

LG

Date:

Quantity	Part mark	Description	Saw length (mm)	Grade	Web			Flange		
					Y (Degree) E (mm)	X (Degree) D (mm)	y (Degree) e (mm)	x (Degree) d (mm)		
6	1026	TUBE 50X3	2,891	Aluminium	0.00		0.00	0.00		0.00
					0	0	0	0	0	
1	1154	TUBE 50X3	2,287	Aluminium	0.00		0.00	0.00		0.00
					0	0	0	0	0	
1	1180	TUBE 50X3	1,957	Aluminium	0.00		0.00	0.00		0.00
					0	0	0	0	0	
2	1099	TUBE 50X3	1,178	Aluminium	0.00		0.00	0.00		0.00
					0	0	0	0	0	
1	1155	TUBE 50X3	651	Aluminium	0.00		0.00	0.00		0.00
					0	0	0	0	0	
1	1156	TUBE 50X3	481	Aluminium	0.00		0.00	0.00		0.00
					0	0	0	0	0	

Quantity	Part mark	Description	Saw length (mm)	Grade	Web		Flange			
					Y (Degree) E (mm)	X (Degree) D (mm)	y (Degree) e (mm)	x (Degree) d (mm)		
4	1168	25x6 FL	0	Aluminium	0.00		0.00	0.00		0.00
					0		0	0		0
1	1036	13.5x2.9 CHS	162	Aluminium	27.73		14.78	62.51		43.97
					7		4	26		13
3	1031	13.5x2.9 CHS	162	Aluminium	-14.78		-27.73	-43.97		-62.51
					4		7	13		26
4	1033	13.5x2.9 CHS	44	Aluminium	0.00		0.00	0.00		46.00
					0		0	0		14
TOTAL QUANTITY			409							